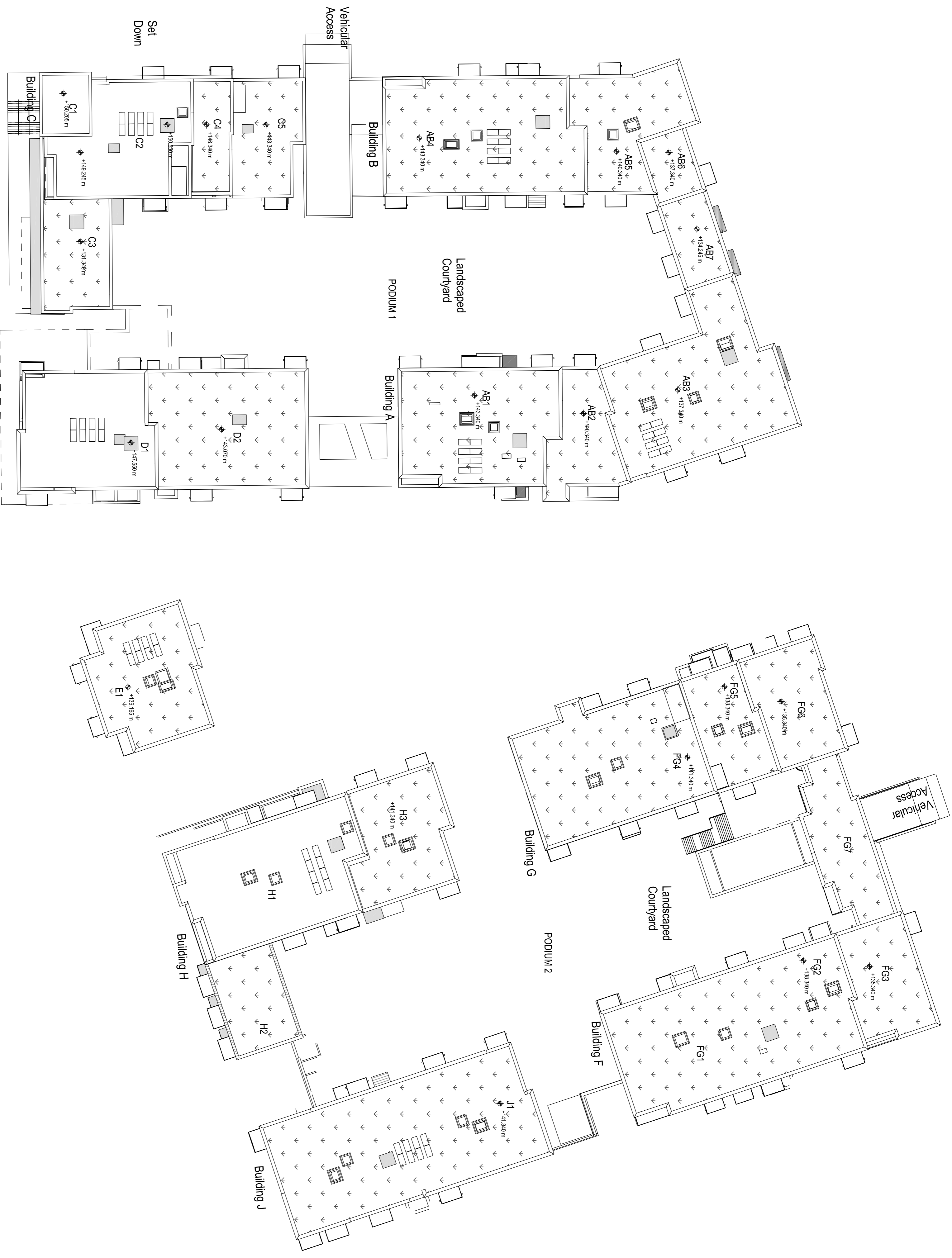


ROOF REF.	CONTRIBUTING AREA (m ²)	BLUE ROOF AREA (m ²)	FLOW (l/sec)	No. of OUTLETS
AB1	533	480	0.54	2
AB2	217	189	0.19	1
AB3	689	595	0.56	2
AB4	671	598	0.56	2
AB5	325	279	0.28	1
AB6	93	80	0.09	1
AB7	129	111	0.17	1
C1	96	78	0.09	1
C2	402	343	0.37	2
C3	231	200	0.27	1
C4	168	116	0.20	1
C5	232	197	0.27	1
D1	472	407	0.53	2
D2	538	480	0.53	2
E1	389	326	0.37	2
FG1	620	545	0.56	2
FG2	224	171	0.20	1
FG3	246	215	0.27	1
FG4	641	563	0.56	2
FG5	224	178	0.19	1
FG6	256	228	0.27	1
FG7	264	227	0.27	1
H1	614	524	0.56	2
H2	202	170	0.19	1
H3	332	286	0.28	1
J1	932	832	0.90	2
PODIUM 1	3007	2100	3.43	5
PODIUM 2	3250	2150	3.96	5



Rev	Date	By	Check	Appr
SHD PLANNING ISSUE				
Revision				

Job Title	SECTOR 3, AIKEN'S VILLAGE STEPASIDE DUBLIN 18
Architect	FERREIRA ARCHITECTS

Project Title	BLUE ROOF LAYOUT
Project Status	SHD PLANNING ISSUE

Drawn	DJS
Checked	
Approved	
Scale	NIS
Date	06-01-21

KAVANAGH BURKE
CONSULTING ENGINEERS

Tel. 01 - 450 0894
Fax 01 - 420 4340
Email: kavanagh@kavanaghburke.ie

Unit G3, Calmount Pk.
Ballymount, Dublin 12

Job No. **D1636** Drawing No. **D19** Rev. **PL3**